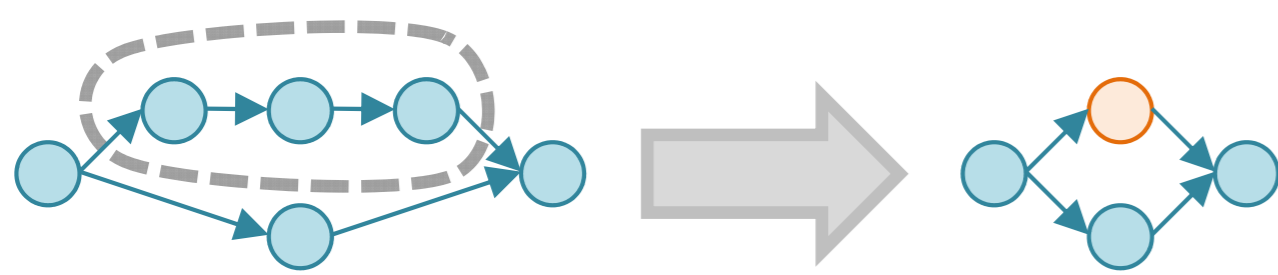


# Process Views and their Application in Compliance Management

## Process Views

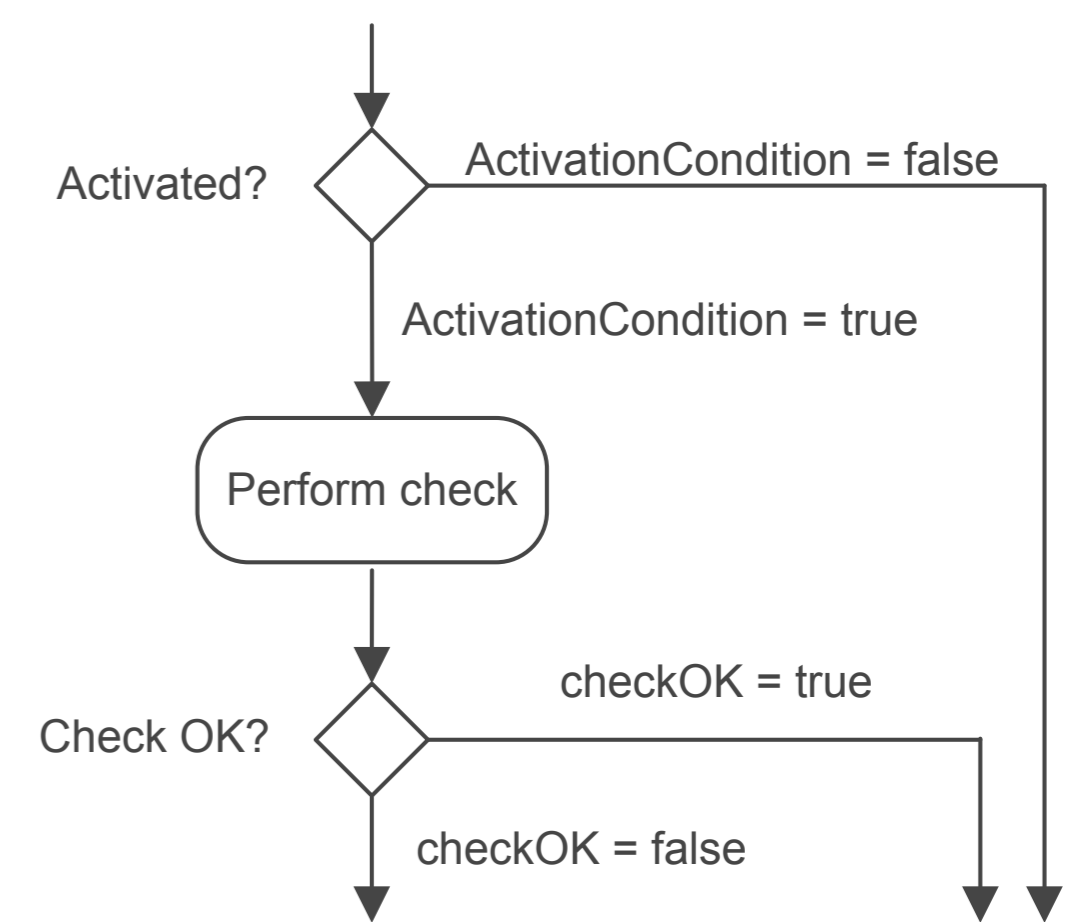


A view on a process intends to **abstract from details** and make complex processes easier to understand. A process view can be described as the outcome of particular **transformations** applied to a process model. Process view transformations typically comprise **omission and aggregation of structures**. Also visualization techniques are applied in order to provide a flexible instrument for the stakeholders of a business process. Process views can be applied in several use cases, for example for generating a public view on a process or for providing a user-specific perspective on a process.

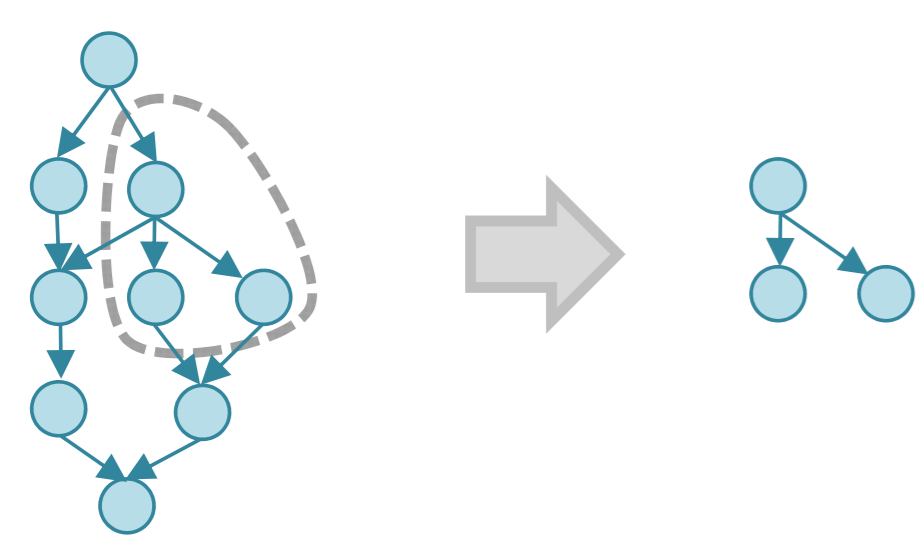
## Compliance Management

Compliance has a strong impact on business management as it requires **profound and traceable changes** of the business processes and the infrastructure supporting their execution. Companies need to take action in order to account for the increasing demands on security, privacy and trust of their services and applications. In addition to static compliance verification and dynamic compliance monitoring, compliance also needs fast and consistent management of **process structures related to compliance**. We use the notion of compliance fragments for referring to such structures.

**Managing compliance fragments** in business processes refers to the extraction of a compliance fragment from an existing process, its integration into a process, its highlighting within a process, and its hiding to improve clarity. Most of these tasks can be fulfilled with the concept of process views.



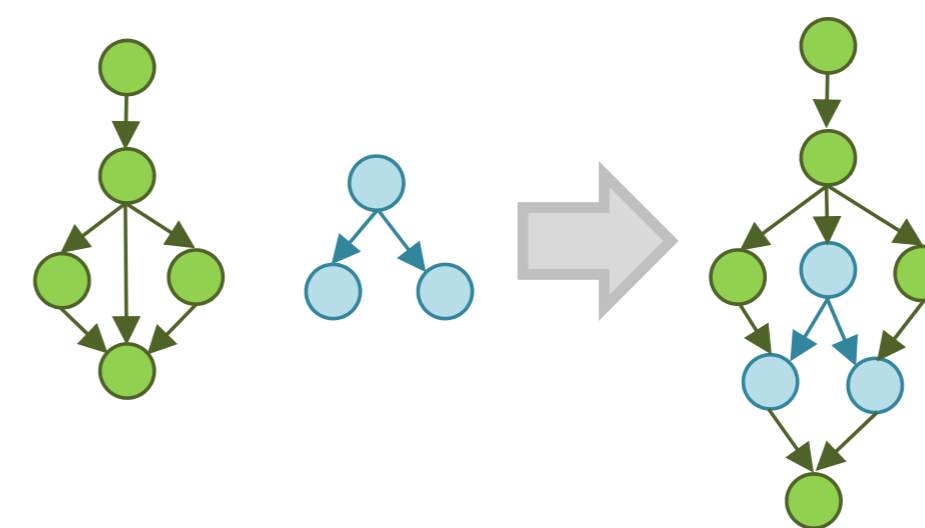
### Process View for Extraction



To make the implementation of a compliance requirement **reusable**, the according structures need to be extracted. A process view can be defined in order to reduce a process to the desired structures

while preserving control dependency. After a fragment has been extracted it can be **stored in a repository**, ready for reuse, highlighting and hiding.

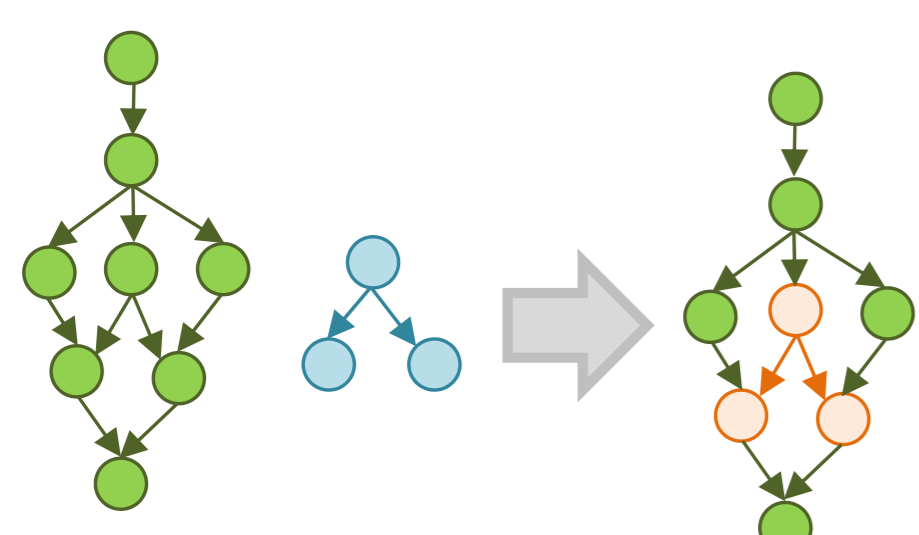
### Methodology for Integration



Compliance fragments can be used to **augment a process** in order to make it compliant to certain requirements related to control structures and activities to be executed.

Fragment integration refers to a methodology for integrating compliance fragments and their related context into a given process.

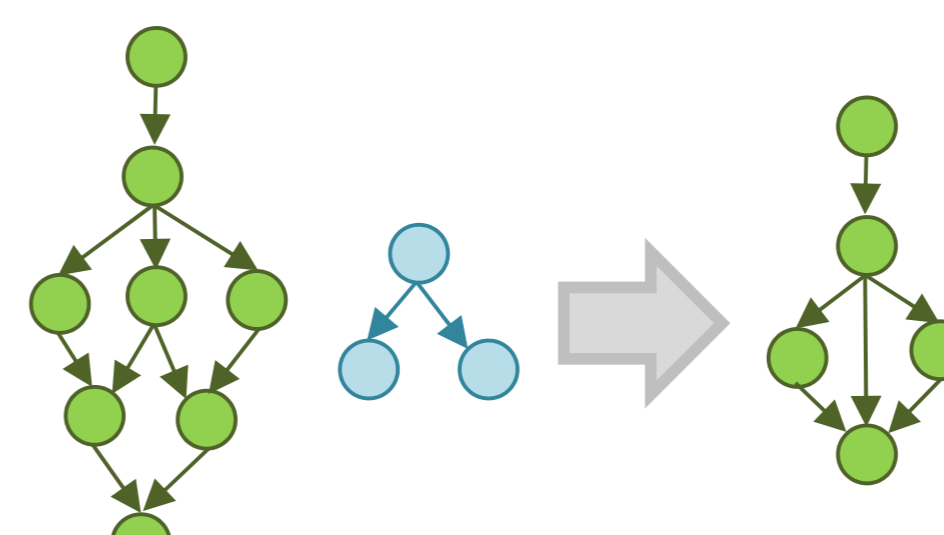
### Process View for Highlighting



During an **audit** a company has to show how compliance requirements have been addressed. Process views also refer to the **visualization** of a process. Sub-graph matching algorithms can be utilized for

identifying known compliance fragments. The result of this fragment recognition step provides an input for appropriate highlighting in process visualization.

### Process View for Hiding



Compliance fragments do not always represent the actual work that needs to be done in a process. When the number of compliance requirements increases, the process becomes

**polluted** and harder to understand. Process views for hiding those fragments provide a **clear view** on an unpolluted process.